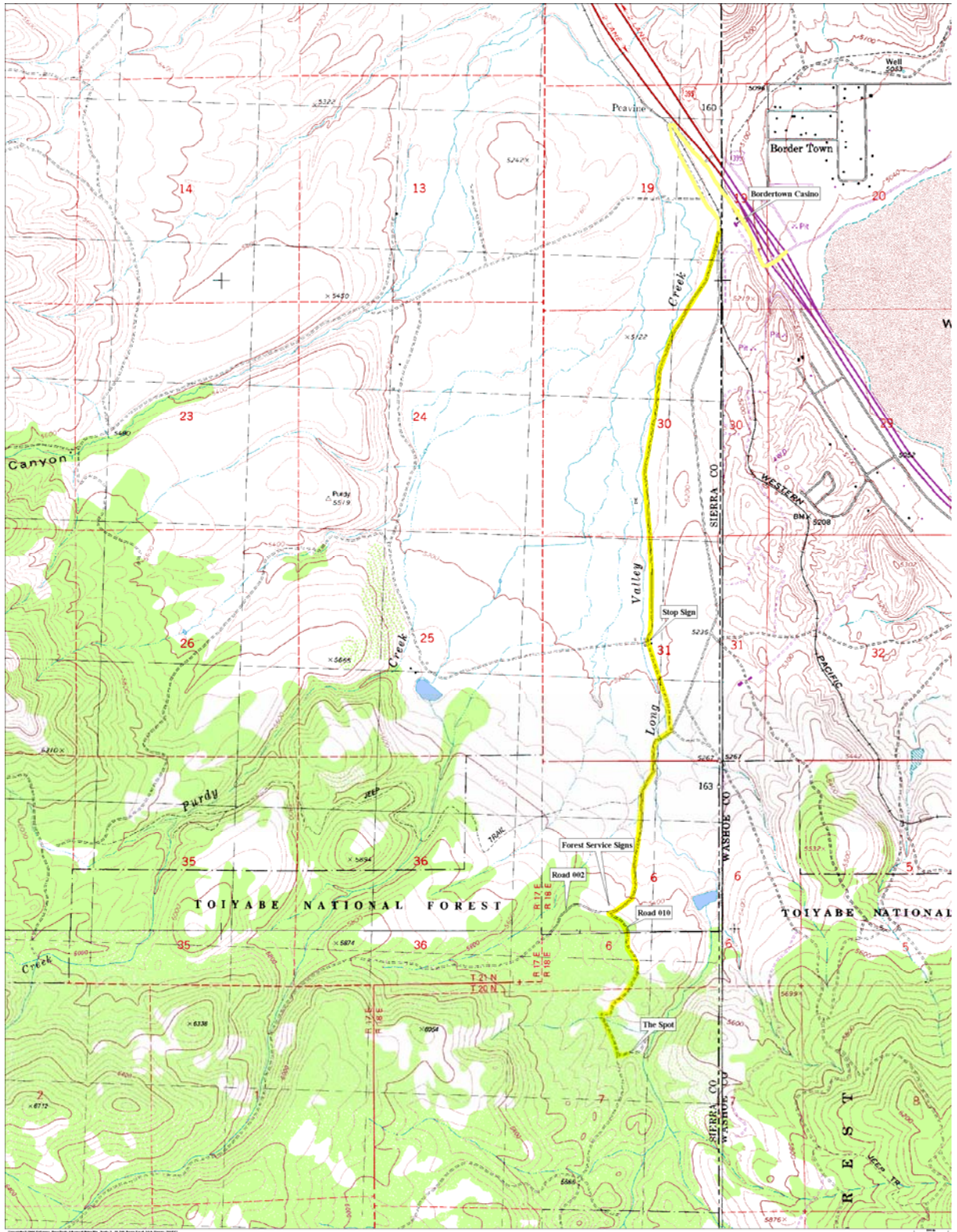


Three Creeks



Directions:

From the Junction of Highways 80 and 395 in Reno, drive 14 Miles North of Reno on Highway 395 and take the Bordertown Exit (Exit 83). Take a left across the freeway and make a right onto the frontage road. Follow the frontage road past the Bordertown Casino (set your odometer when you pass the casino), paralleling the freeway, and go straight through a stop sign. The road will make a 180 degree turn and cross the railroad tracks. After a short distance there is a Y in the road, bear right. At 3.0 miles you'll come to a stop sign next to a ranch, go straight. At 4.2 miles you'll come to a cattle guard and some forest service signs, look left to see forest service road 010 (its kinda hard to see). Turn left onto Road 010. Continue on Road 010 down a hill and turn left on the unmarked road that goes to the creek at 5.4 miles. Turn left here (you should be able to see the cars from this intersection).